

## Habitat

“... restore and conserve Wisconsin’s waterfowl and wetland resources.”

# 2023: *Habitat Mission*

## Wood Duck Box Program - 2023

- Volunteers put out 120 wood duck boxes
  - maintained 300+ more
- Hanging close to 100 more this year
- Sold 112 more online to WI residents



## Logistics

- Funding Support – NRF\*
- Blackwell transition
  - Volunteer backfill
- Move to McNaughton



# 2023: *Habitat Mission*

## Adopt a Wildlife Area program

- Wood duck boxes, invasives
- Black tern, accessible blinds
- '23 Initiatives
  - Fence line at Paradise valley (chapter grant program)

## Looking ahead:

- New statewide coordinator: Ryan Disterhaft
- GB agreement with NRCS for Abrams



# 2023: *Habitat Mission*

## Public Lands Program with the DNR

- Signed 2=>3-year contract w/ WDNR.
  - 1.4M acres of property to manage
  - State has the funding, but not the staff or expertise
  - 75% funded by DNR,
    - Remainder by EXPO, Foundations, WWA
- Year one: Ramp-up and Process development, initial reveiws
  - Hired 1.5 FTE ecologists
  - + received \$150,000 in Duck Stamp grants
- Wild rice restoration

... opening doors to new types of opportunities: NRCS, KSI/Jackson Marsh, Little Yellow River



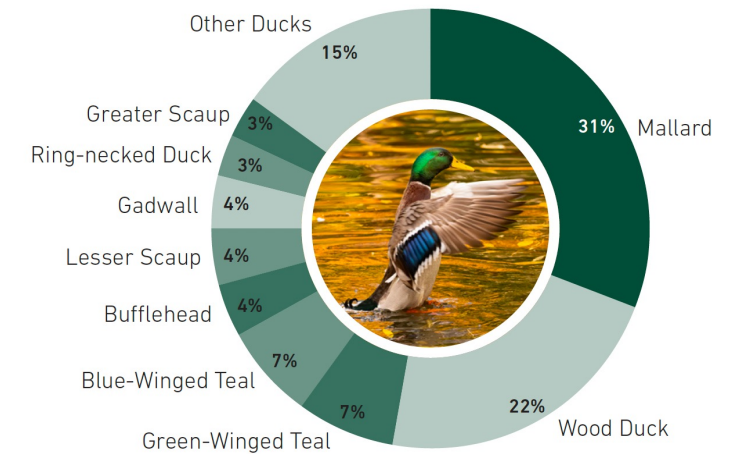
# 2023: *Habitat Mission*

## Private lands Program

- More later...
- Value proposition to duck hunters
  - Most ducks harvested in WI are hatched in WI (65%)
  - Most restorable wetlands are privately held (75-85%)
  - Breeding ducks prefer smaller wetlands over larger bodies—they are more productive
  - Private landowners invested in their lands maintain those lands
- Restoration project filming



## Wisconsin Waterfowl By-the-Numbers



# 2023: *Habitat Mission*

## Looking Ahead:

- AWA program statewide coord
- PLE project starts
- Wild rice program growth
- NRCS contract
  - \$100K / year, another ecologist?



# WWA's Public Lands Program

- Wetland restoration project design and implementation
- Wild rice restoration
- Year One: Setting the groundwork for project implementation in 2024 and 2025



# The Process

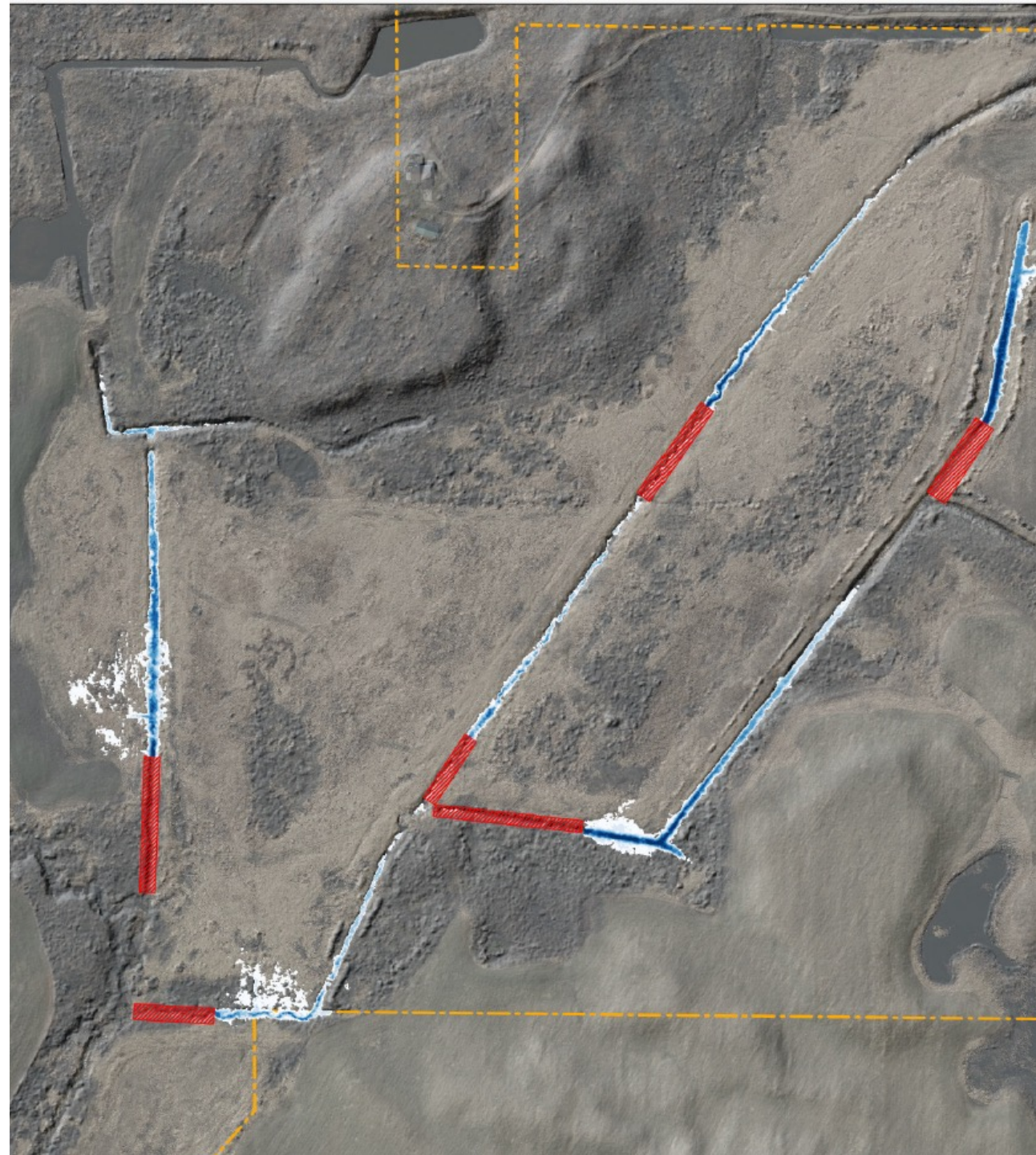
- Identify sites
- Desktop review
- Discussions with managers
- Site visits
- Project design
- Permitting
- Contracting construction work





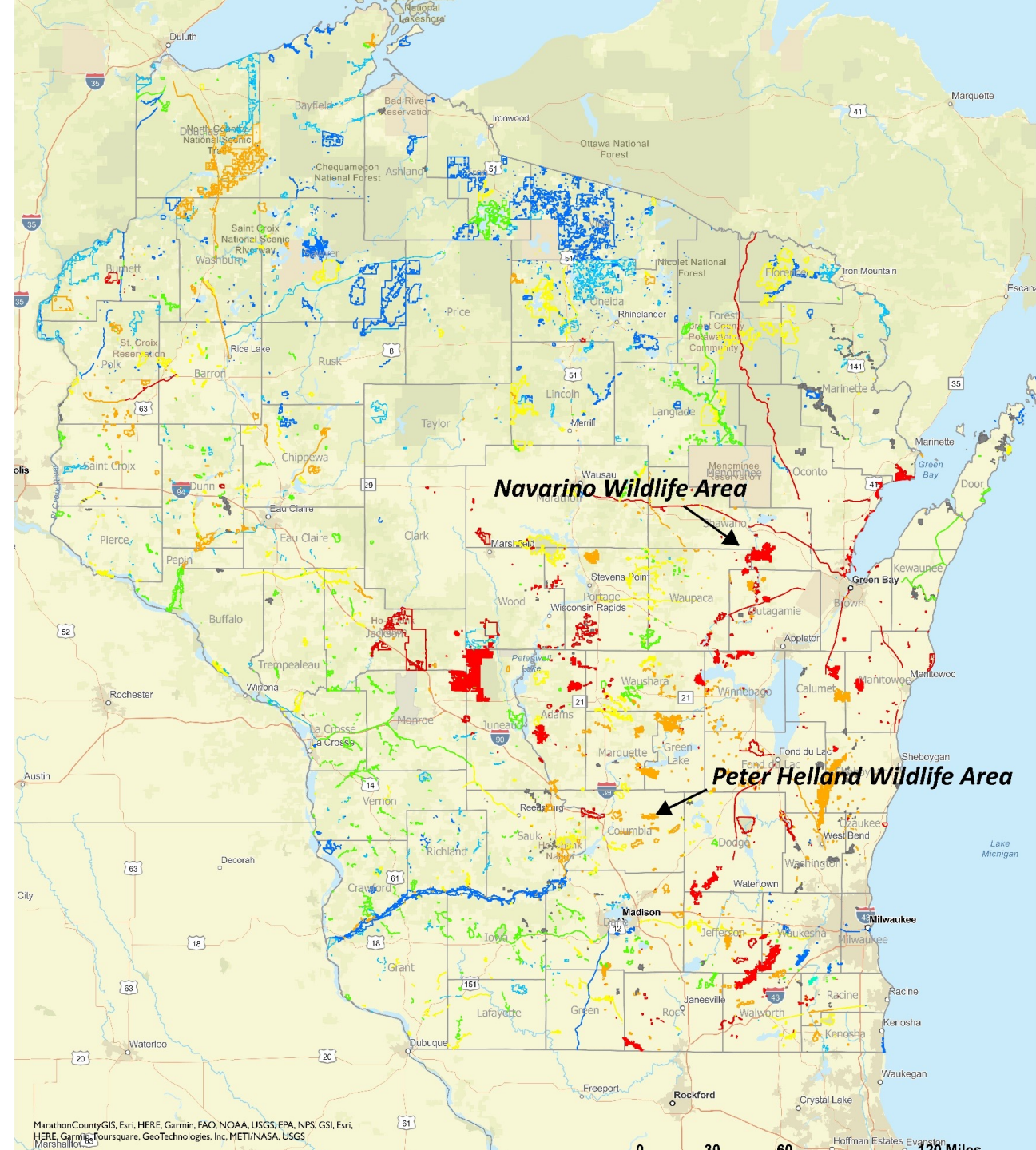
# Determining Restoration Potential

- Presence of drain tile or ditching
- Recreational use and management goals
- Property boundaries and potential impact to private lands
- Farm leases and other incompatible land use
- Confirming elevations, modeling



# PLE By The Numbers

- 145 properties reviewed, ~350,000 acres
- 1 restoration in permitting (Navarino Wildlife Area)
- 1 restoration in final design, nearing permitting (Peter Helland Wildlife Area)
- 1 restoration in design, on hold until 2026 (Brooklyn Wildlife Area)
- Numerous projects in early discussion and project design (Kettle Moraine State Forest & Young Prairie SNA, Evansville Wildlife Area, Wolf River Bottoms, Koshkonong Wildlife Area, Deer Creek)

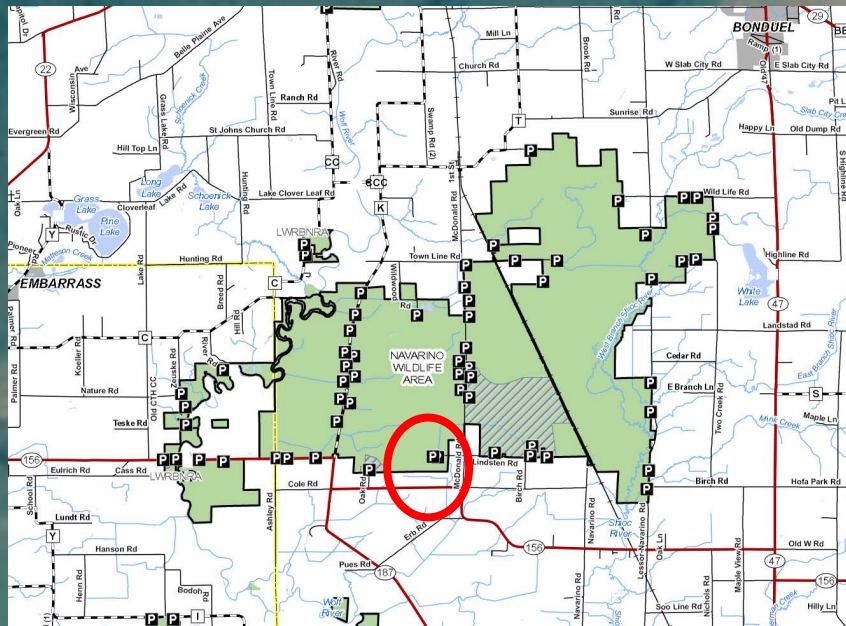


# Wild Rice Conservation

- Partnered with DNR to collect and seed wild rice within the Ceded Territories
- Annual plant
- 250 pounds collected, 1,400 pounds purchased in 2023



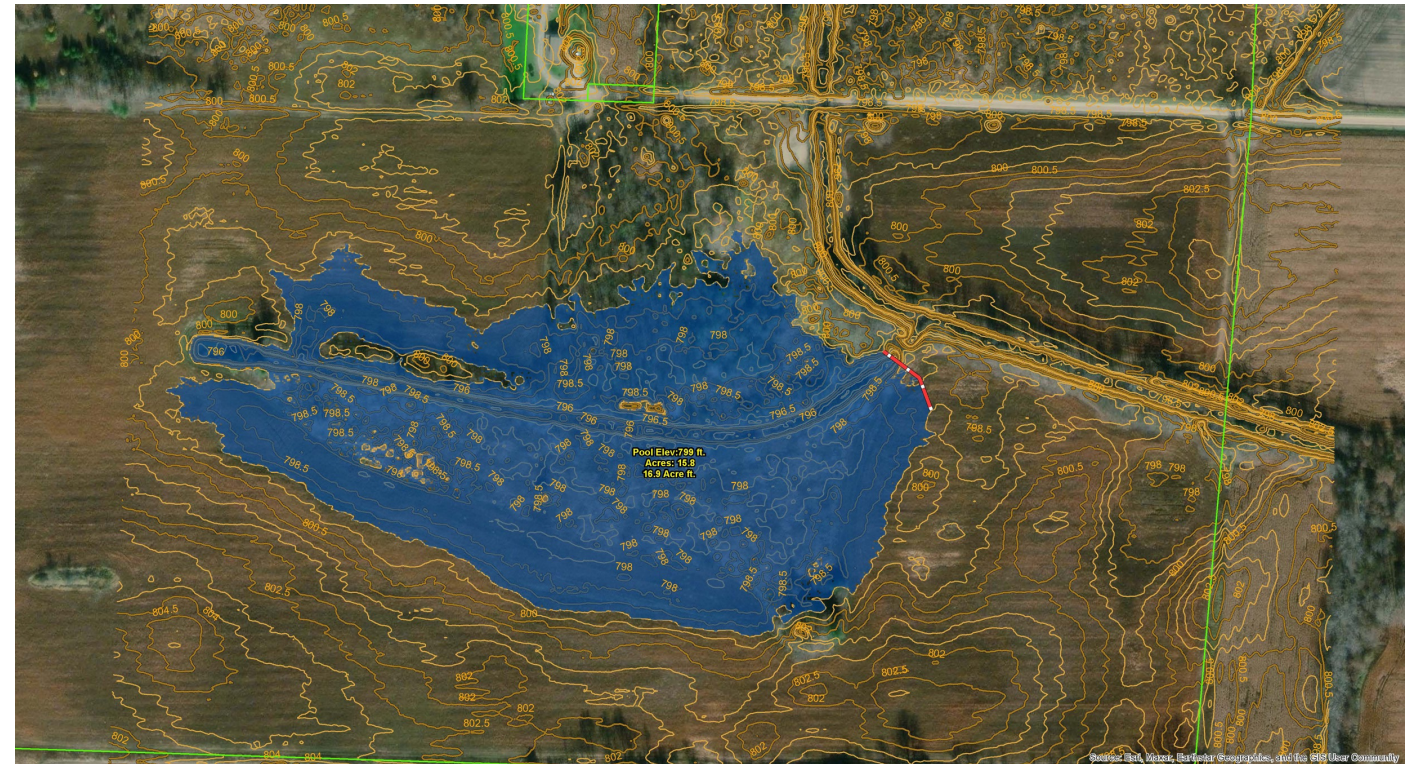
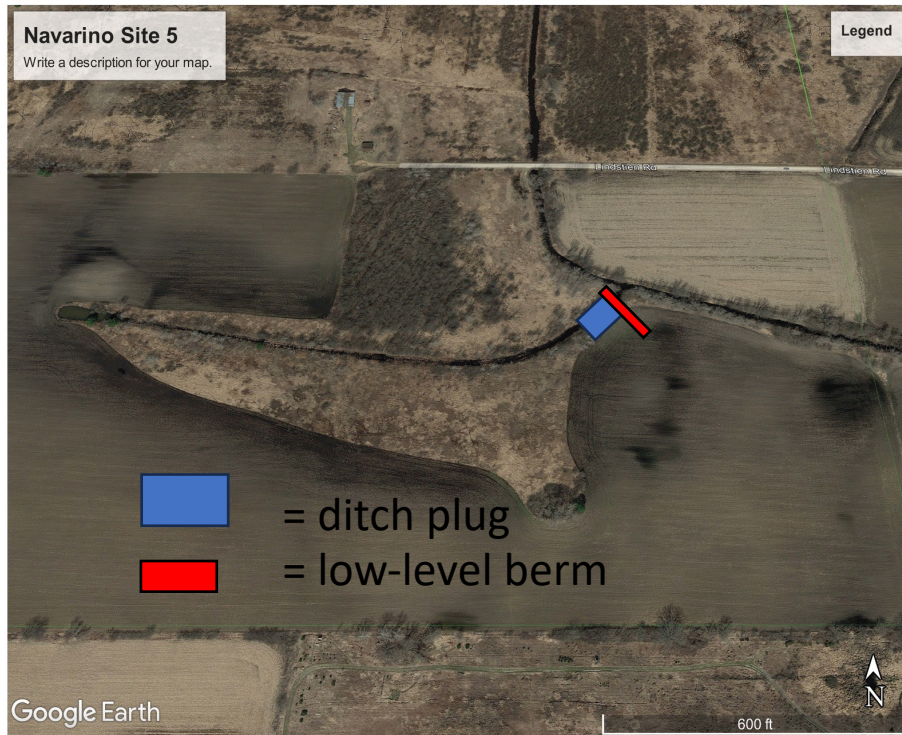
# Navarino Wildlife Area, Schwano County



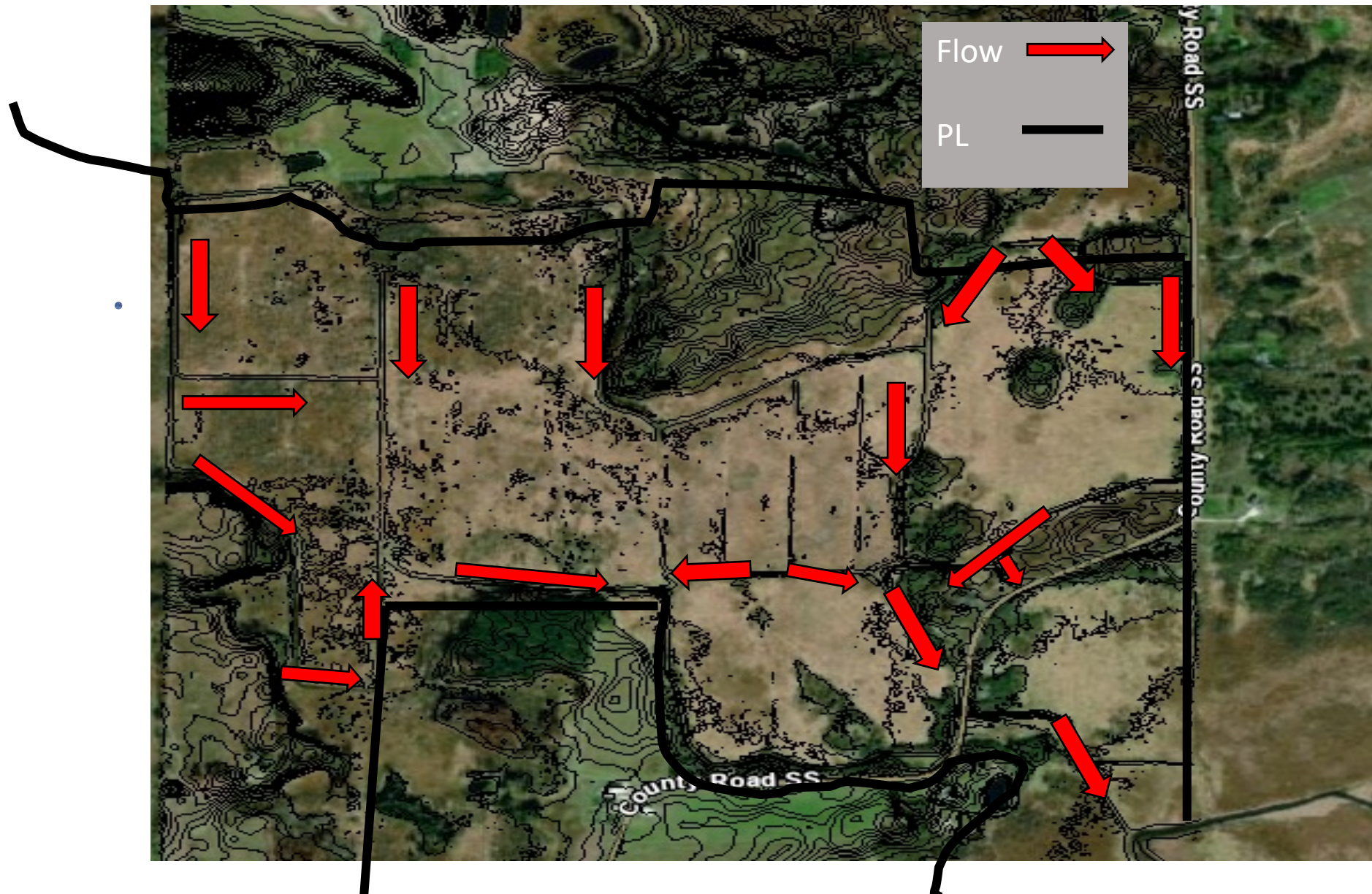


# Alternative 3

Plug and long berm at 799				
plug	1093 cubic yds	\$6,533 estimate cost	15.8 acres modelled	\$475 cost/acre
berm	139	\$972	16.9 acres ft modelled	



# Peter Helland Wildlife Area, Columbia County

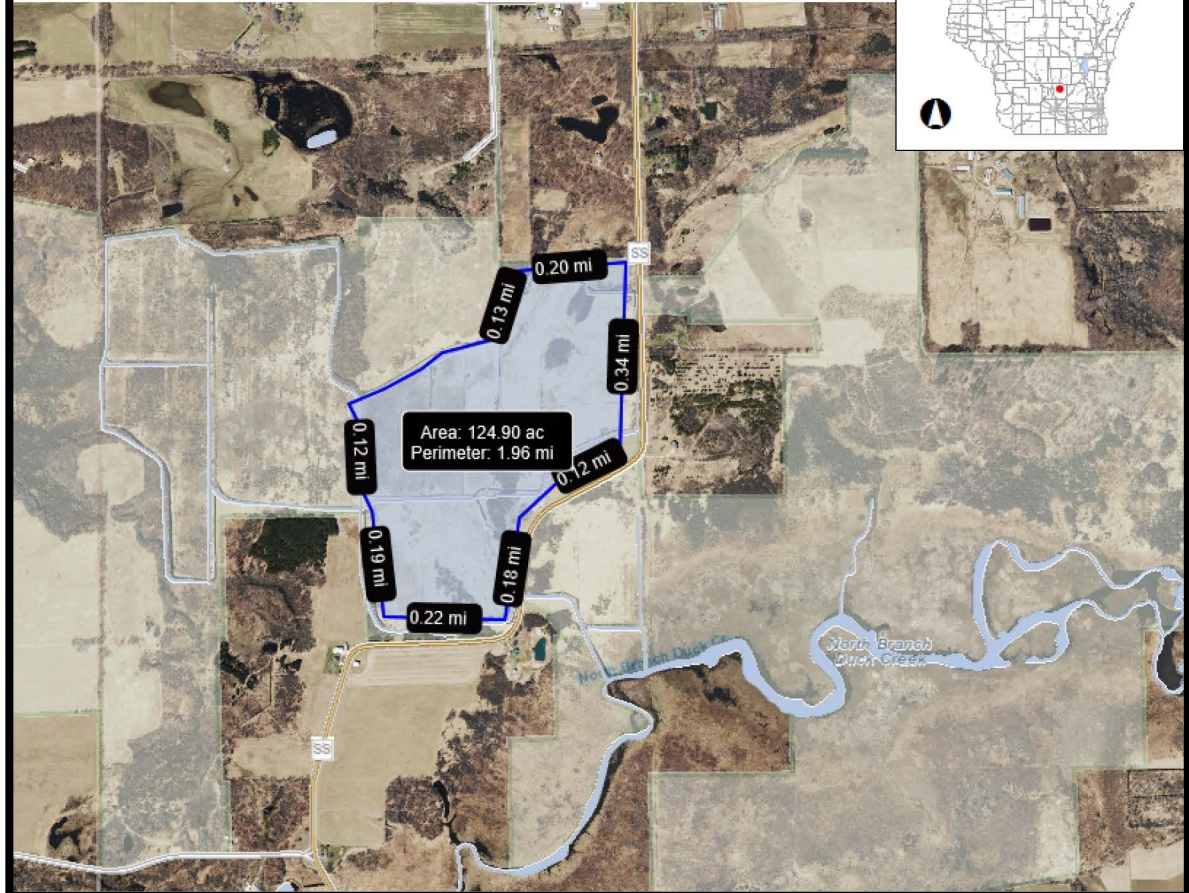




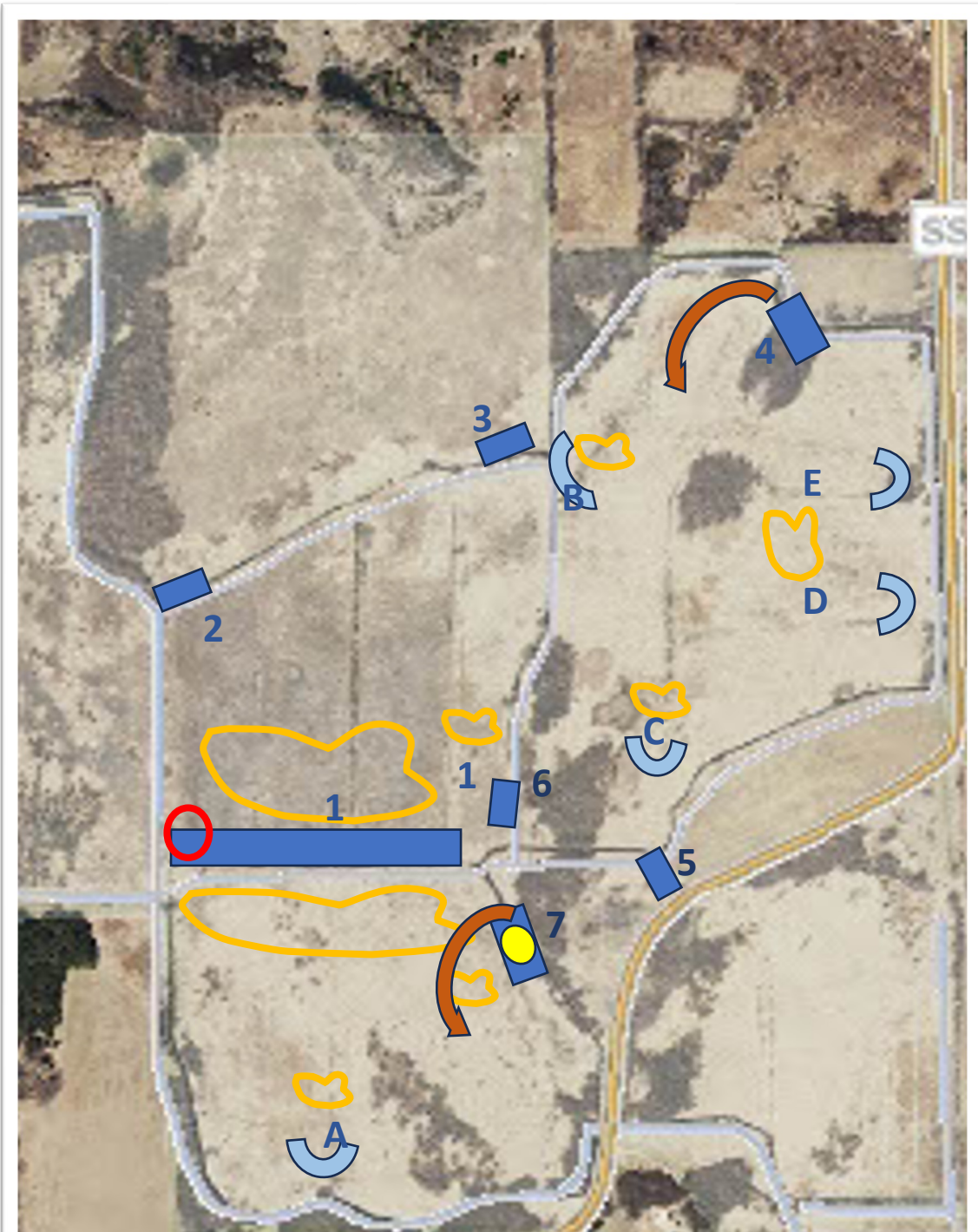
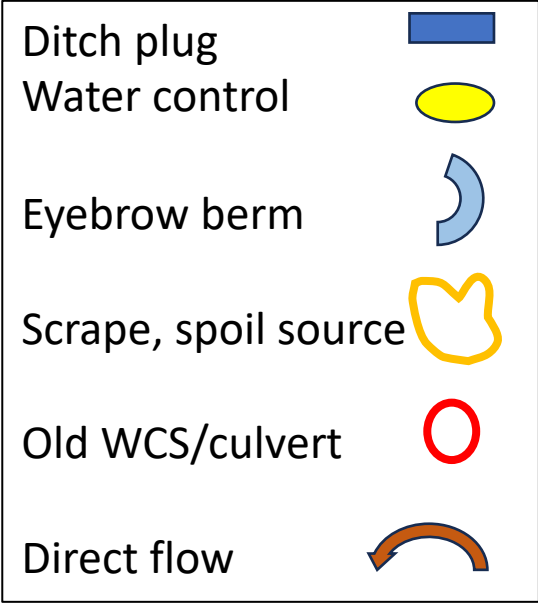
### Surface Water Data Viewer Map



### Surface Water Data Viewer Map









# Wisconsin Waterfowl Association Habitat Program 2023



2010 WWA Project and Proposed Phase II

# 2022 Restoration

Wetlands Restored

71 Acres

Grassland Enhancement

75 Acres

Grant Funds WWA leverages

\$31,000

Match Funds Leveraged from Partners/Landowners

\$65,000



Cloud Doc iframe

# Infrastructure 2023

- 6 water control structures
- 4 ditch fills/plugs and berms
- Scrapes 6
- 1 Sheet Pile Structure

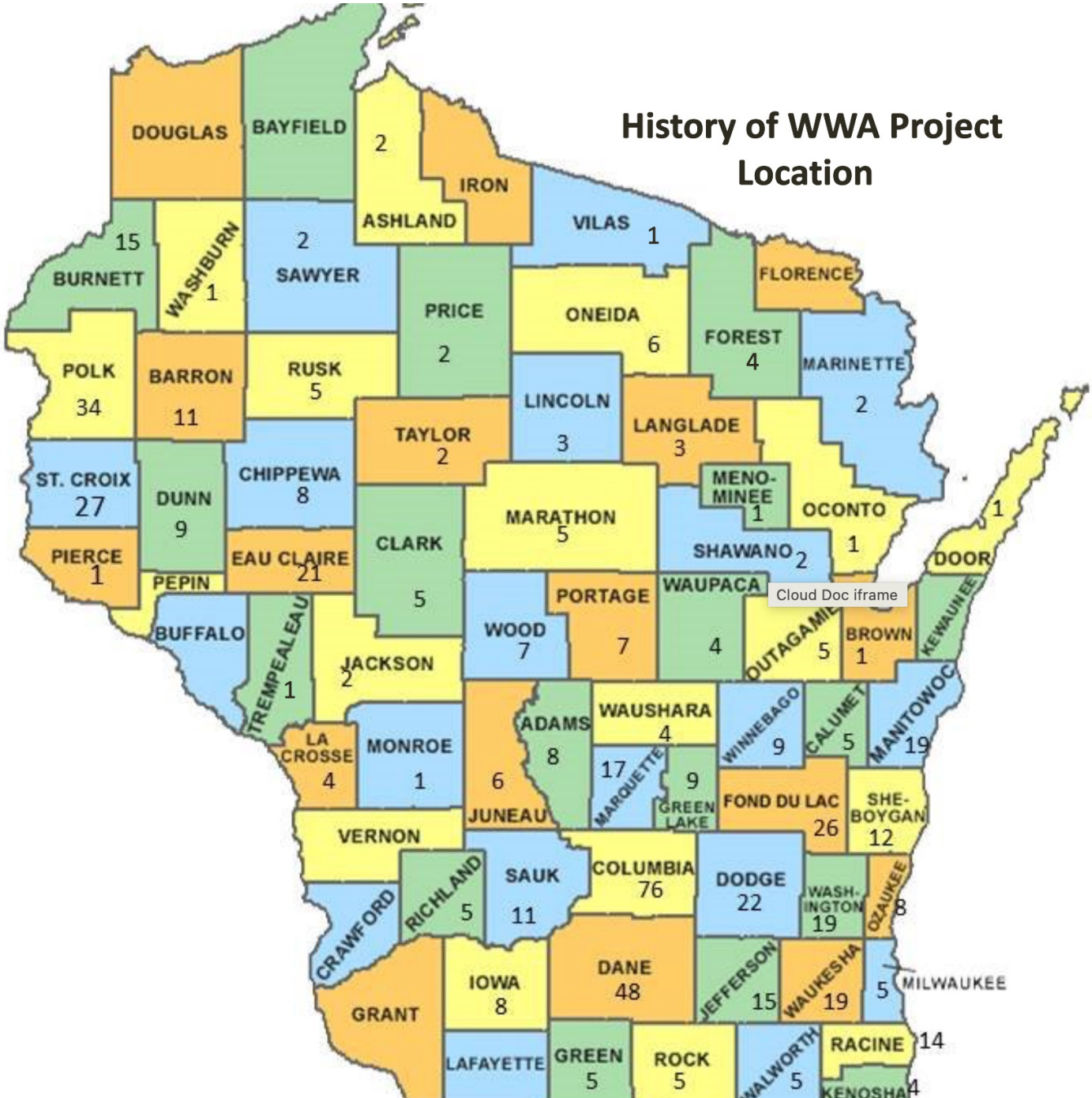


# Impact Beyond Dirt Moving

- ◎ 25 project Apps ~ 2- yr average
- ◎ Secured 1,400 lbs of Rice
  - Powell Marsh
  - Crex Meadow
  - West Plum Lake

# History of WWA Project Location

- Winnebago-1
- Dodge-1
- Fond Du Lac-1
- Dane- 1
- Marquette- 1
- Sheboygan-1
- Iowa-1
- Columbia-1
- Vilas-2
- Burnette-1



# Wild Rice

- Partnered with DNR on Large NAWCA
- 35K in Wild Rice- WWA, GLIFWC primary wild rice seeding partners
- \$15,000 Stamp funds spent 22-23



Cloud Doc iframe



# FWS Partnership

<b>Year</b>	<b>Upland Acres</b>	<b>Wetland Acres</b>	<b>Private Landowner Match</b>	<b>WWA Match</b>	<b>USFWS Funding</b>
<b>2018</b>	370	191	\$155,514	\$22,500	\$150,000
<b>2019</b>	72	58	\$120,746	\$12,525	\$83,500
<b>2020</b>	326	66	\$303,669	\$27,900	\$186,000
<b>*2021</b>	352	124	\$336,192	\$19,100	\$191,000
<b>*2022</b>	157	8	\$131,582	\$20,000	\$200,000
<b>*2023</b>	100	5	\$40,000	\$21,750	\$217,500
<b>Total</b>	1,377	452	\$1,087,703	\$123,775	\$1,028,000

WWA's \$123K has yielded nearly \$2.25M of funding for private lands restoration

# Funding our Efforts

## WWA 2023-2025 Waterfowl Stamp projects (Duck Stamp)

WWA granted funding for 2 proposals

1. \$50,000 for our habitat program- wetlands restorations on private and public lands.
2. \$150,000 for WDNR Wildlife Area (public lands) falling under the Public Lands Ecologist projects.

Cloud Doc iframe

\*Intent is to match those funds with NAWCA Grant in October

Awarded 50,000 for small NAWCA grant in September

Applied for 100,000 NAWCA grant for the “Pines” Project in partnership with ALF, Pines family and WDNR.

# Leopold Area Habitat Restoration

Awarded NAWCA Grant

WWA and Ozaukee/  
Washington PF chapter

PF – 165 acres of grassland  
enhancement/restoration

WWA – 137 acres wetland  
Restoration

PF match- \$21,000

WWA match- \$32,000

Grant- \$50,000



## Legend

● Old/New Match Wetland Restorations    ● Grant Grasslands

▭ project Boundary, Leopold WMD

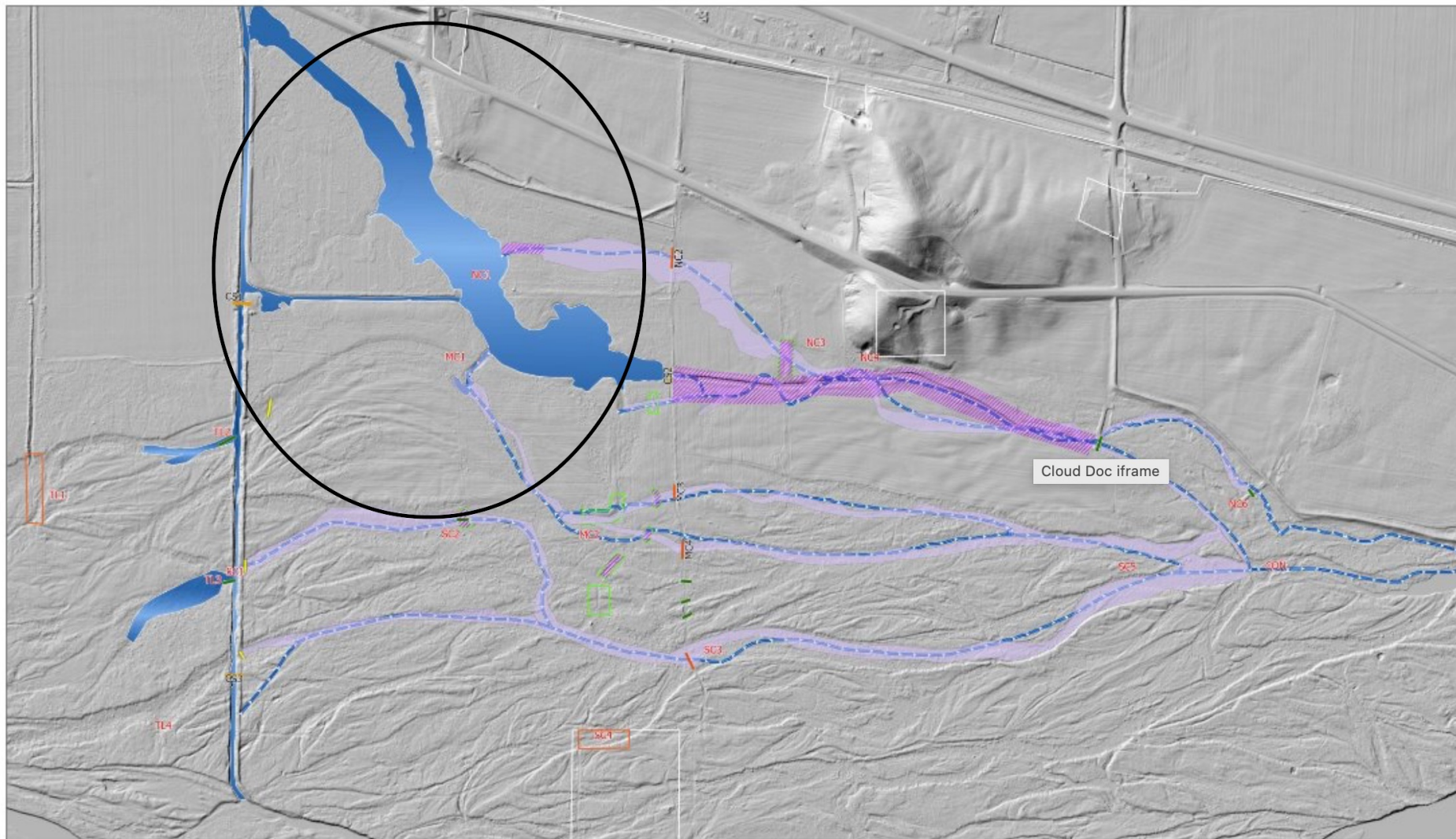
▭ WI Counties

▭ Hydro Lines

Tract 1- Grant Wetland Restorations TBD

0 12.5 25 50 Miles





- Legend**
- Pond
  - Coverts
  - Area of Excavation or Fill
  - Control Structures
  - Other Funds
  - Water Conveyances
  - Property Line
  - Canion
  - Historic
  - Human Modifications
  - Water Flow
  - Consistent
  - Surface Water

**Pines Wetland Restoration Working Map**

Created By: Carl Carter & Eric Sipester  
2022 Imagery



Total area is ~400 acres  
58 forested, 72 emergent, 20 acres of ag conversion

# Site Evaluation



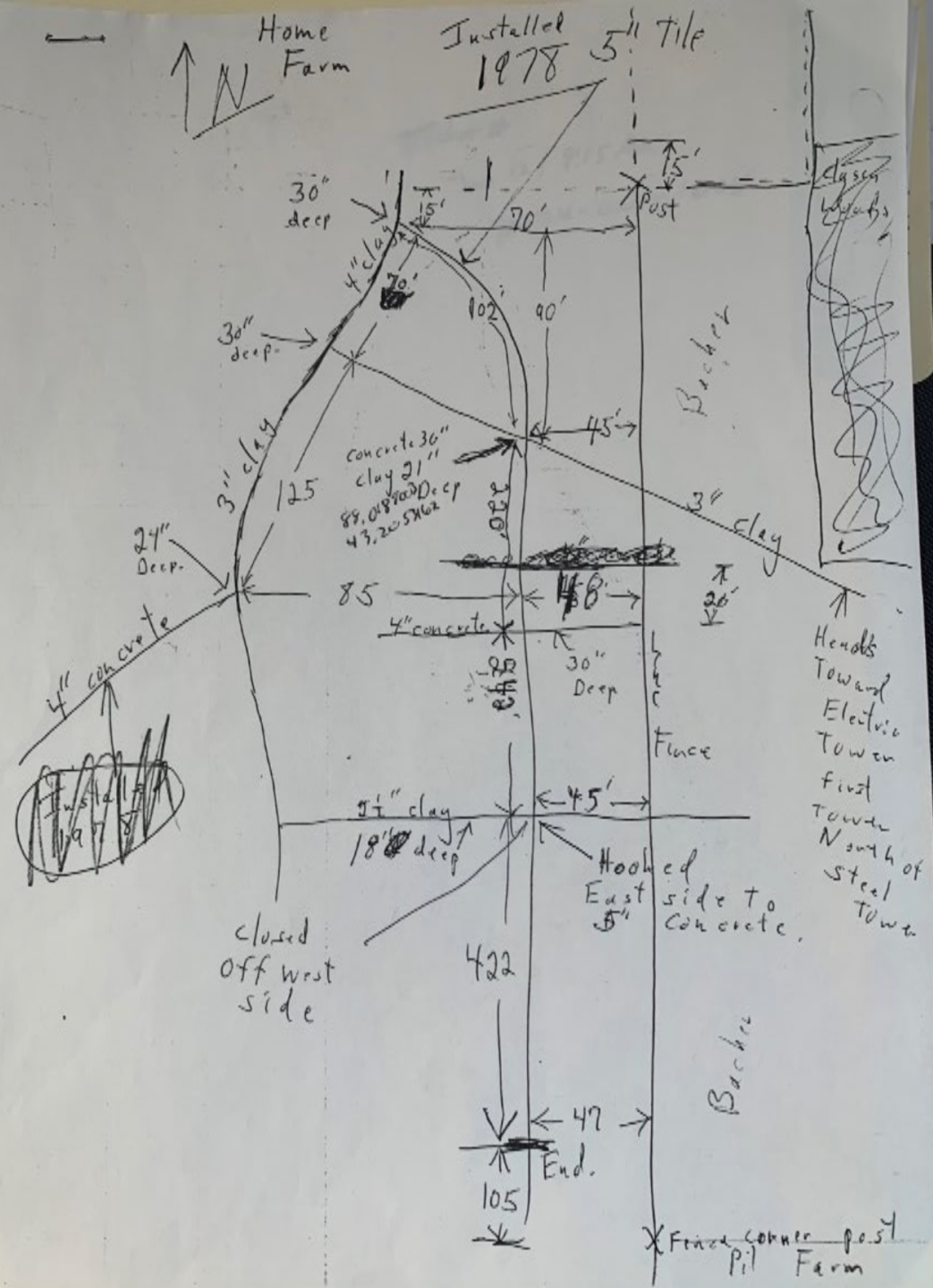
Soil exploration

Finding Drain Tile





Drain Tile Exploration- determine size, depth and activity level for planning and design considerations



Tile mapping Gold for wetland restoration

## What not to do with your WCS





# Cherokee Marsh

Funding from WDNR Ag Mitigation Grant

Over 2,000 acres  
Site is 30 acres

Partnership with  
WDNR, FWS,  
Dane County



Update: Project under construction





Ditch clean out and filling

Installing fabric and rock





← Placing sheeting

Vibrating down →



A cutout for WCS →





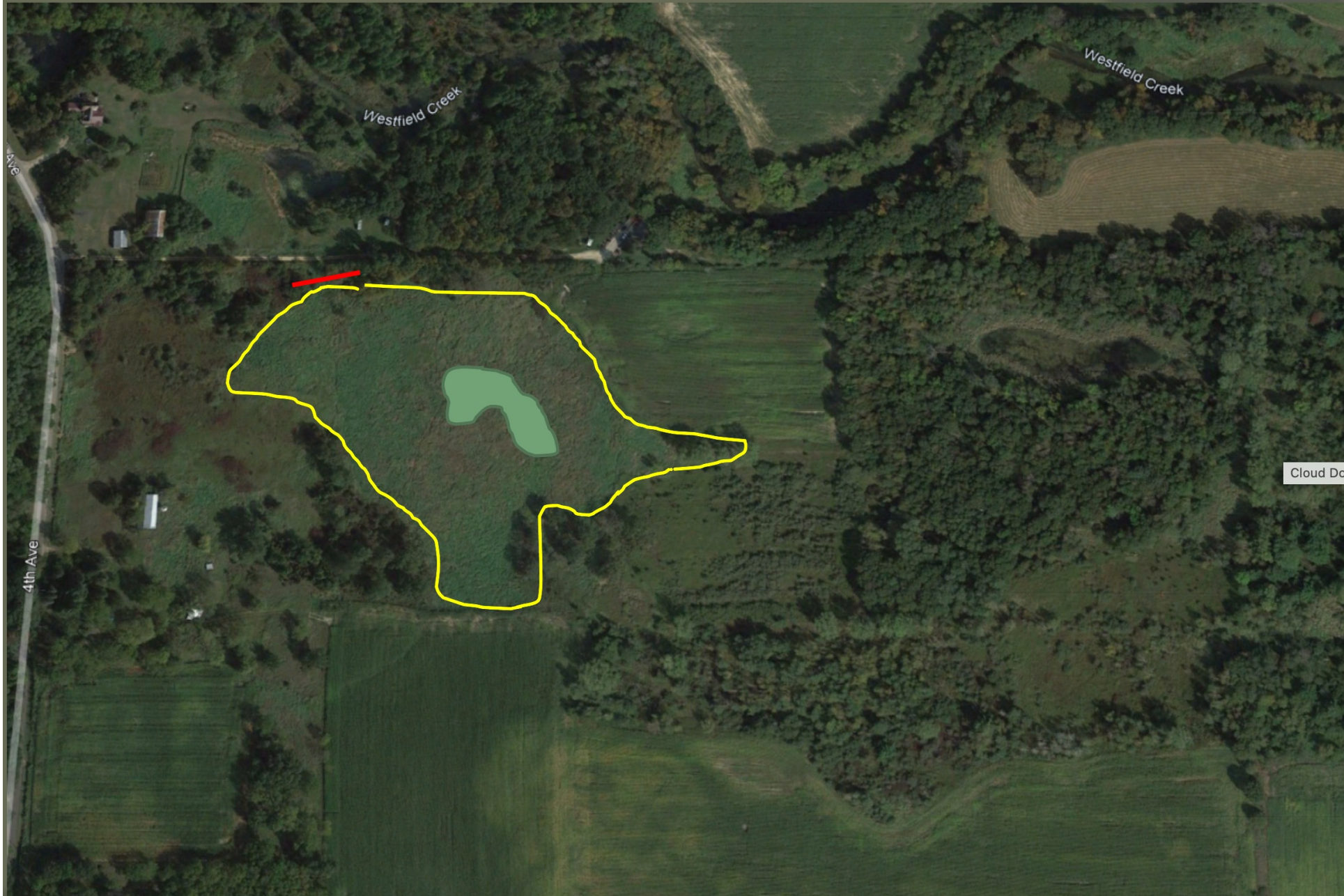
Cut off water seepage  
Inadequate soil for berm





Fabric and stone install on spillway





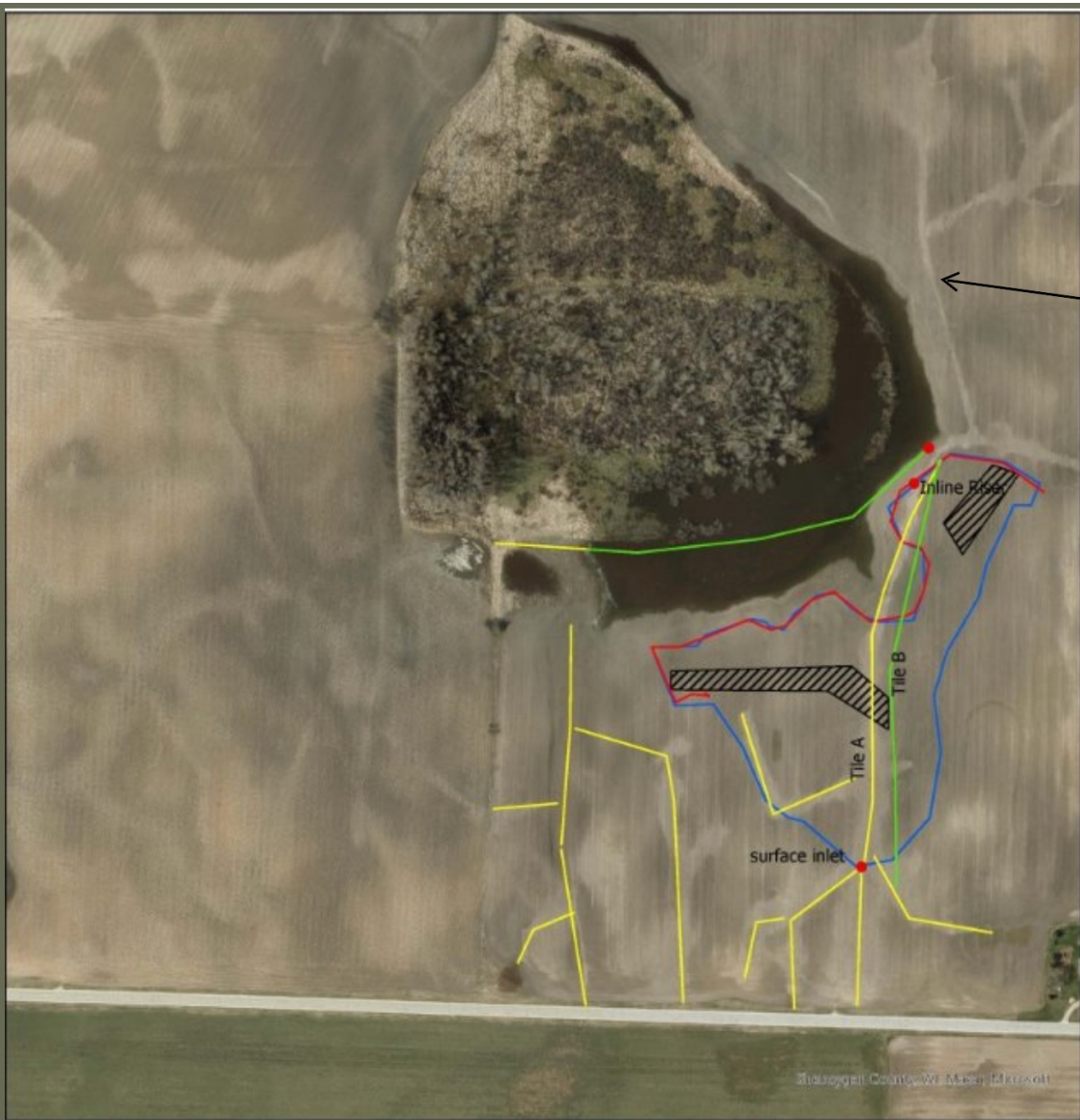
Westfield Creek

Westfield Creek

4th Ave

4th Ave

Cloud Do

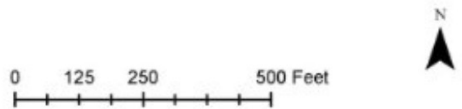


More Tile Lines

5 acres restoration  
10 acres of enhancement

**Legend**

- berm
- wetland
- Tile lines
- connection points
- Tile Solid install
- scrape for berm material



Stibogen County, WI, March 2008

## Tile Line Disablement

